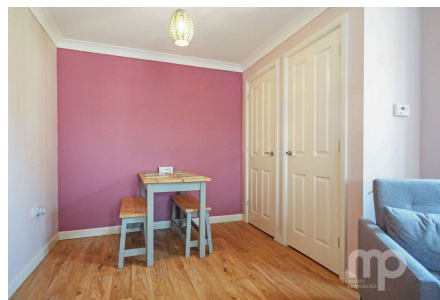


Abbey Road, Wymondham, NR18

£170,000

2 1 1



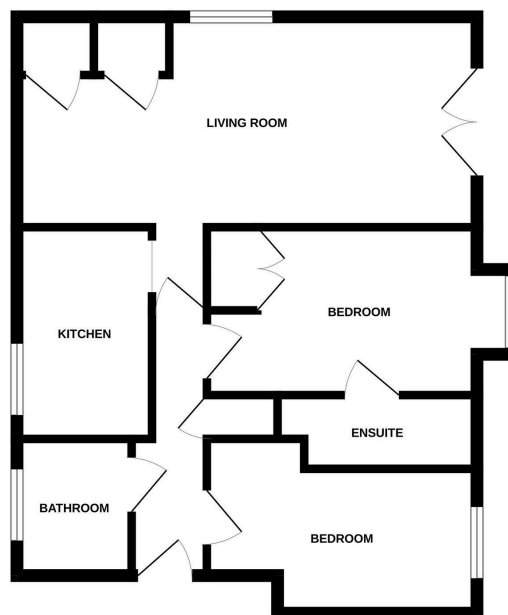
Moneyproperties are proud to present this spacious two-bedroom first floor apartment with allocated off-road parking. This immaculate first floor apartment comprises of two double bedrooms, primary with en suite, family bathroom, kitchen, and 21ft living room/diner. The property is perfectly placed for access to the main A11, walking distance from the town's railway station with regular services to Norwich and Cambridge, the town centre with all its amenities. This would be the perfect home for a young couple looking to be close to all amenities, professional couple looking to commute to Norwich or Cambridge via road or rail or investors.

Tenure: Leasehold EPC: B Council Tax: A

Key Features

- Spacious two-bedroom first floor apartment
- Ensuite to bedroom one
- Within ease of access to the A11 for commuting to Norwich and Cambridge
- Allocated off-road parking space
- Newly fitted flooring to the living room, hallway and kitchen
- Two double bedrooms
- 21ft dual aspect living room/diner
- Close proximity to the town centre and all its amenities along with the local train station
- Ideal purchase for first time buyers, professionals or investors
- See our full online listing for further details including flood risk, broadband speed and other material information.

GROUND FLOOR



Whilst every attempt has been made to ensure the accuracy of the floorplan contained here, measurements of doors, windows, rooms and any other items are approximate and no responsibility is taken for any error, omission or mis-statement. This plan is for illustrative purposes only and should be used as such by any prospective purchaser. The services, systems and appliances shown have not been tested and no guarantee as to their operability or efficiency can be given.
Made with Metropix (2023)